

SXR Series – Part Numbering



Features

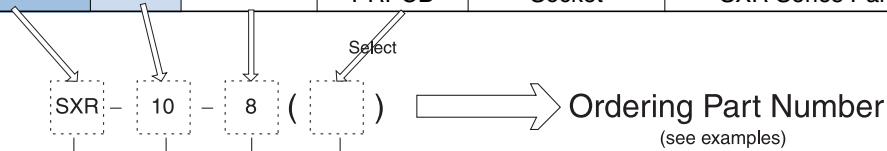
- Miniature
- Ultra Light Weight
- Ground Function

Applications

- Professional Audio
- Professional Video
- Camera

Part Numbering

Part Number	Size	Number of Contacts	Suffix	Contact Type	Notes	Page
Series						
SXR	10	8	P	Pin	SXR Series Plug	100
			R	Socket	SXR Series Receptacle	100
			PRPCB	Socket	SXR Series Panel PCB Receptacle	100



Connector Series

SXR Series

Size

10

No. of Contacts

8

Body Type

P : Plug

R : Receptacle (solder termination)

PRPCB : Panel Receptacle (PCB termination)

Examples

SXR - 10 - 8 (P)

SXR series - Size 10 - 8 contact (Plug)

SXR - 10 - 8 (R)

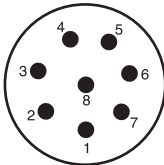
SXR series - Size 10 - 8 contact (Receptacle)

SXR - 10 - 8 (PRPCB)

SXR series - Size 10 - 8 contact (Panel Receptacle PCB type)

Specifications subject to change without notice. Consult Sam Woo Electronics for the latest specifications.

Major Performances / Contact Arrangements

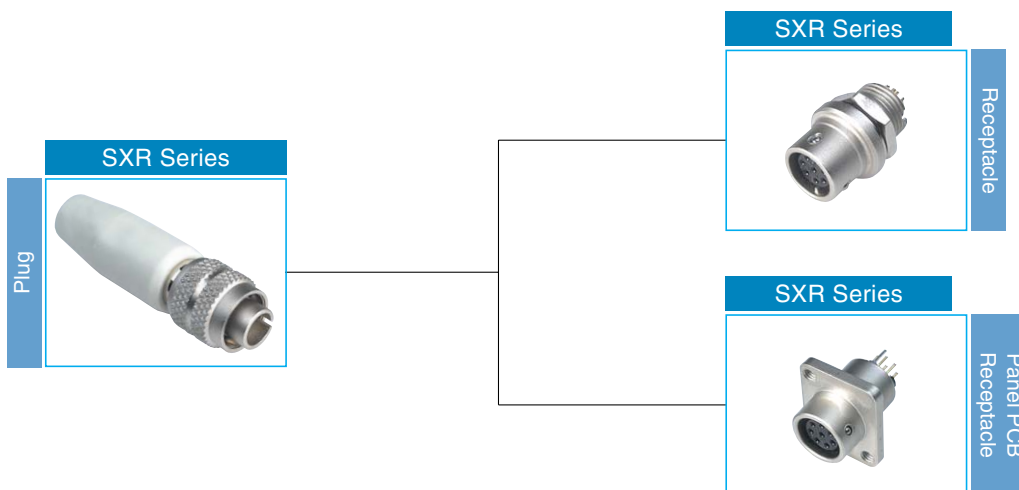
Size / No. of Contacts	Size 10
Performance	8
Withstanding Voltage (per min) ¹	AC 300V
Rated Current	2A
Insulation Resistance (Minimum) ²	1,000MΩ
Contact Resistance (Maximum) ³	20mΩ
Solder Pot Inside Diameter	∅0.9
Contact Arrangement	

- ¹ Withstanding voltage is the tested voltage value in this table.
- ² Insulation resistance is measured at DC 100V.
- ³ Contact resistance is measured at DC 1A.
- Values are from tested items and may not apply to all connectors.
- Specifications subject to change without notice.
- Consult Sam Woo Electronics for the latest specifications.

Material Used / Finish

	Material	Finish
Body	Alluminum alloy	Nickel plate
Insulator	PBT resin	Black
Contacts	Pin	Brass
	Socket	Phosphor bronze
		Silver plate

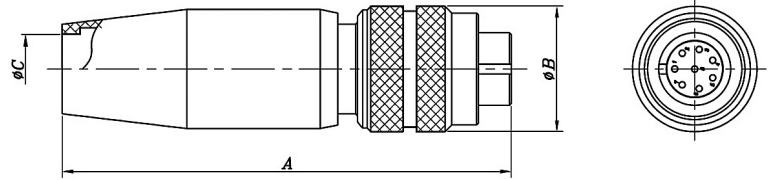
SXR Series Mini-map



Specifications subject to change without notice. Consult Sam Woo Electronics for the latest specifications.

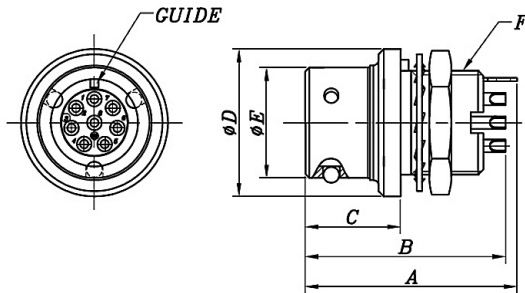
SXR Series – Plug, Receptacle

SXR Plug



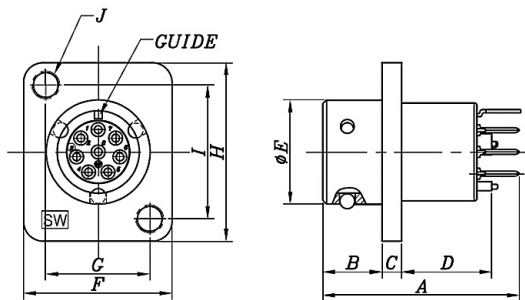
Part Number	A	ØB	ØC
SXR-10-8 (P)	50.0	14.0	8.0

SXR Receptacle



Part Number	A	B	C	ØD	ØE	F
SXR-10-8 (R)	20.2	19.1	9.1	14	10.5	M10×0.75P

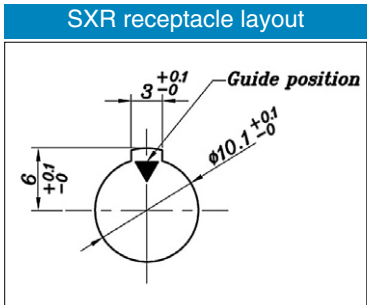
SXR Panel PCB Receptacle



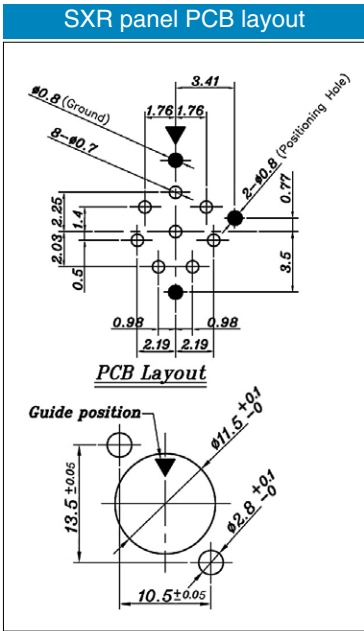
Part Number	A	B	C	D	ØE	F	G	H	I	J
SXR-10-8 (PRPCB)	20	6	2	9.1	10.5	15	10.5	18	13.5	M2.5×0.45P

Specifications subject to change without notice. Consult Sam Woo Electronics for the latest specifications.

SXR Receptacle Layout



• Panel thickness 1~4mm



• Panel thickness 1.6mm or less



Specifications subject to change without notice. Consult Sam Woo Electronics for the latest specifications.

