

SM Series – Part Numbering



Features

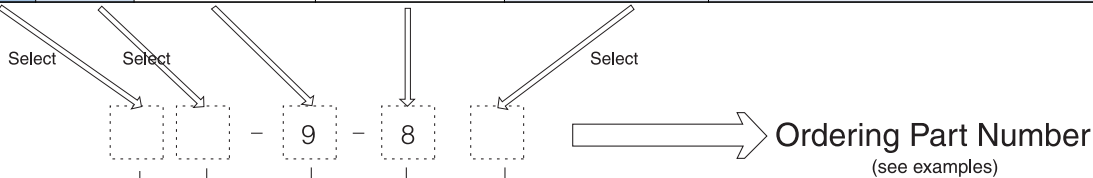
- Miniature circular
- High durability / reliability
- Light weight

Applications

- Professional audio and video
- CCTV system
- Portable wireless radio
- Factory Automation
- Computers and peripherals
- Medical, and much more.

Part Numbering

Part Number		Size	Number of Contacts	Suffix (Contact Type)	Notes	Page		
Series	Prefix							
SMP		9	8	P	Plug (Male contact)	30		
				R	Receptacle (Female contact)			
	H			P	Plug (Female contact)			
				R	Receptacle (Male Contact)			
	A				Adapter			
HA				Adapter				
SMS						P	Plug (Male contact)	31
						R	Receptacle (Female contact)	
	H					P	Plug (Female contact)	
						R	Receptacle (Male Contact)	
	A				Adapter			
	HA				Adapter			



Examples

SMP - 9 - 8 (P)

SMP series - Size 9 Plug - 8 contacts pin

SMS - 9 - 8 (R)

SMS Series - Size 9 Receptacle - 8 contacts socket

SMSHA - 9 - 8

SMSHA series - Size 9 Adapter - 8 contacts pin

Connector Series

SMP Series : Push-pull type

SMPH - Reverse contact for SMP Series

SMPA - Adapter for SMP Series

SMPHA - Adapter for SMPH Series

SMS Series : Screw-on type

SMSH - Reverse contact for SMS Series

SMSA - Adapter for SMS Series

SMSHA - Adapter for SMSH Series

Size

9

No. of Contacts

8

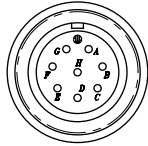
Body Type

P : Plug

R : Receptacle

Specifications subject to change without notice. Consult Sam Woo Electronics for the latest specifications.

Major Performances / Contact Arrangements

Size/No. of Contacts	Size 9
Performance	8
Withstanding Voltage (Vrms)	700
Rated Current	2A
Rated Voltage (Vrms)	200
Insulation Resistance (Minimum)	1000M Ω or more at DC500V
Contact Resistance (Minimum)	8m Ω
Temperature Range	-25 $^{\circ}$ C to + 85 $^{\circ}$ C
Contact Arrangement	

- ¹ Withstanding voltage is the tested voltage value in this table.
² Insulation resistance is measured at DC 100V.
³ Contact resistance is measured at DC 1A.
 • Values are from tested items and may not apply to all connectors.
 • Specifications subject to change without notice.
 • Consult Sam Woo Electronics for the latest specifications.

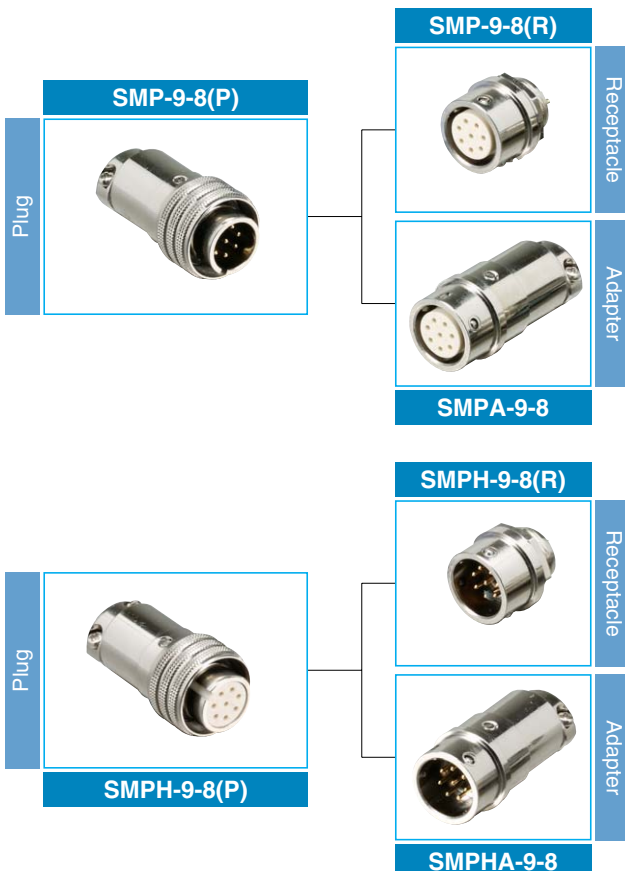
Material Used / Finish

		Material	Finish
Body		Brass	Ni plate
Insulator		PA	Black, Ivory
Contacts	Pin	Brass	Gold plate
	Socket	Phosphor bronze	Gold plate

SM Series Mini-map

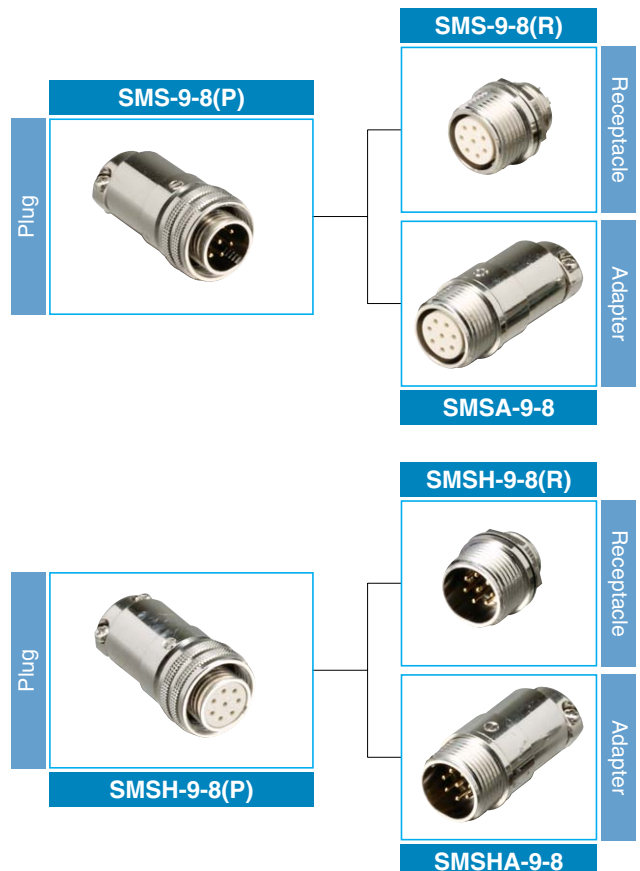
SMP Series

Push-Pull Type



SMS Series

Screw-On Type

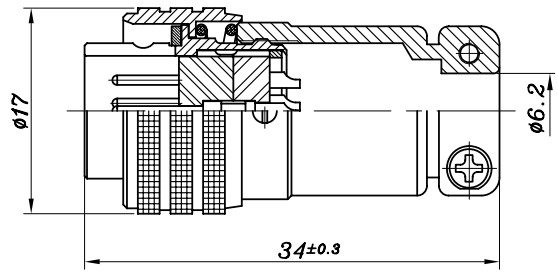
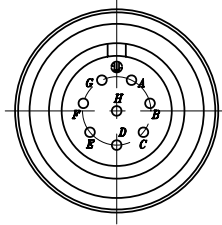


Specifications subject to change without notice. Consult Sam Woo Electronics for the latest specifications.

SMP Series – Push-Pull type

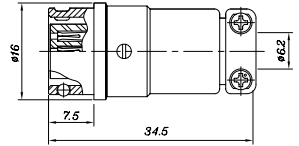
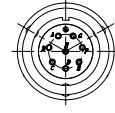
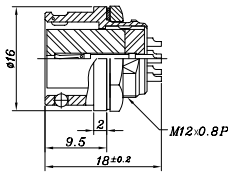
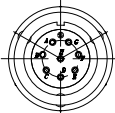
SMP - 9 - 8 (P)

Push-Pull Type



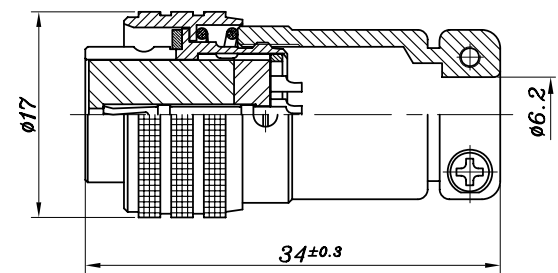
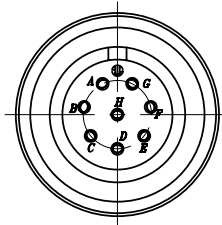
SMP - 9 - 8 (R)

SMPA - 9 - 8



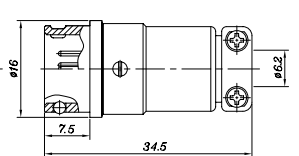
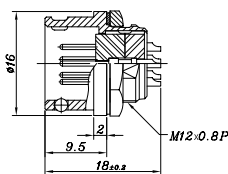
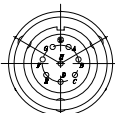
SMPH - 9 - 8 (P)

Push-Pull Type



SMPH - 9 - 8 (R)

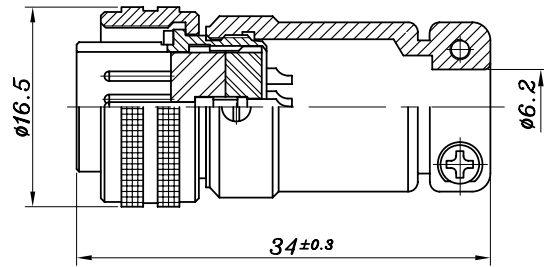
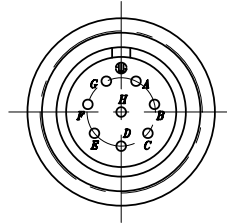
SMPHA - 9 - 8



Specifications subject to change without notice. Consult Sam Woo Electronics for the latest specifications.

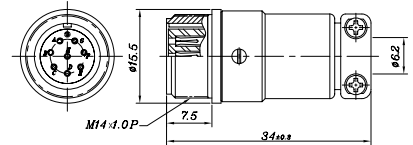
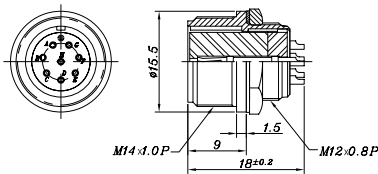
SMS - 9 - 8 (P)

Screw - On Type



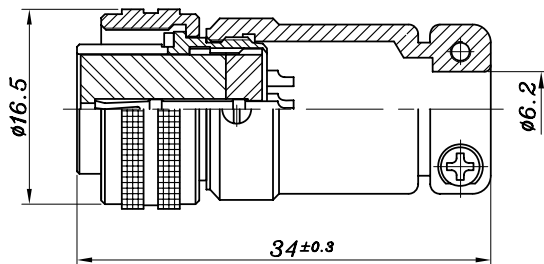
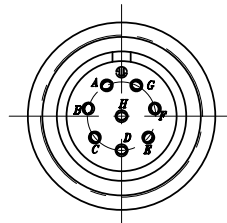
SMS - 9 - 8 (R)

SMSA - 9 - 8



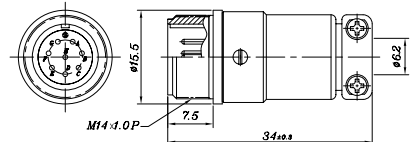
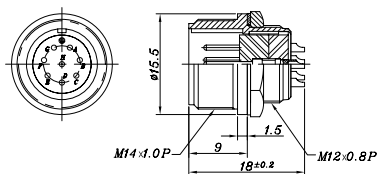
SMSH - 9 - 8 (P)

Screw - On Type



SMSH - 9 - 8 (R)

SMSHA - 9 - 8



Specifications subject to change without notice. Consult Sam Woo Electronics for the latest specifications.