

# BNC 75Ω – High Frequency



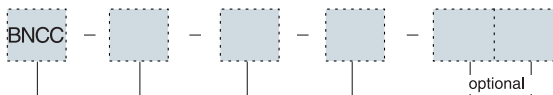
## Features

- Top-quality performing 75Ω BNC
- Quick, reliable connection
- Intermateable with 50Ω series

## Applications

- TV broadcasting
- CCTV
- Satellite receivers
- Medical imaging equipment, etc.
- CATV transmitters
- Telecommunications
- Computer networking

## BNC Part Numbering (plug & adapter)



### Connector Series

BNCC-BNC 75Ω series

### Body Type

PC : Plug (crimp type)      AJJ : Adapter (jack-jack)  
 APJ : Adapter (plug-jack)    APP : Adapter (plug-plug)

### Cable code

Code	Cable in use
1.5C	1.5C 2V
2.5C	2.5C 2V
3C	3C 2V
5C	5C 2V
6CHF	6CHFB
7C	7C 2V
7CHF	7CHF
6	RG6/U
59U	RG59/U, Belden 1505A
179U	RG179/U
1855A	Belden 1855A
VK2	Percon VK2
VK5/6.0	Percon VK5/0.6
VK6/0.8	Percon VK6/0.8
VK7/1.0	Percon VK7/1.0
VK95	Percon VK95

### Frequency

1 : 1GHz      3 : 3GHz

### Boot Color Code

BK - Black	BU - Blue	BR - Brown
GY - Gray	GN - Green	OR - Orange
PR - Purple	RD - Red	WH - White
YE - Yellow		

### Boot Code

01 : RG - 179, 1.5C 2V  
 02 : 2.5C 2V, 3C 2V  
 03 : 1505A, RG - 59/U

BNC Part Numbering

Specifications subject to change without notice. Consult Sam Woo Electronics for the latest specifications.

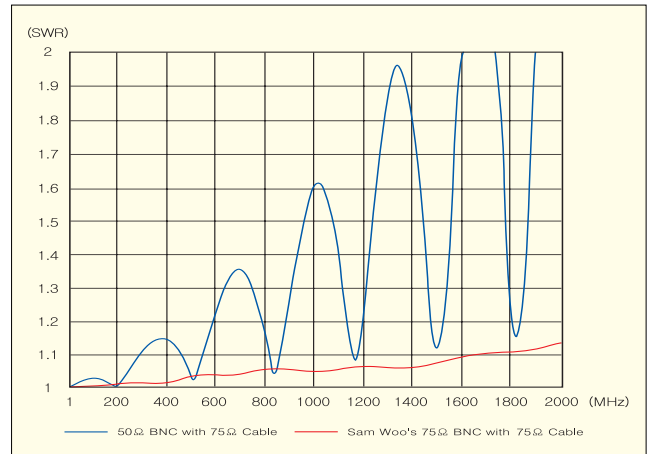
## Major Performance

Impedance	75Ω	Insulation resistance	5,000Ω	
Frequency range	0~3 GHz	Contact resistance	Center Contact	3.5mΩ max
Voltage rating	500V R.M.S		Outer Contact	2.5mΩ max
Dielectric withstanding voltage	1,500V@sea level	V.S.W.R	<1.2	

## BNC 75Ω Advantage

### Why use BNC 75Ω Connectors?

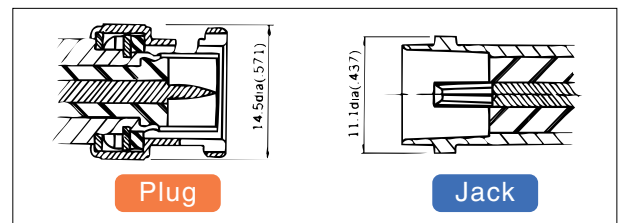
The 50Ω BNC connector that terminates to the 75Ω video coax is not sufficient in producing maximum performance for today's high analog and digital transmission, causing a mismatch that results in signal degradation and reduction in picture quality. The data on the right shows that the 75Ω connectors outperform the 50Ω in terms of VSWR. Thirty-centimeter long cables with both BNC ends are used to generate the data.



## Material Used / Finish

General		Material	Finish
Body		Zinc alloy or Brass	Nickel plate
Insulator		PTFE	White
Contacts	Pin	Brass	Gold plate
	Socket	Beryllium copper	Gold plate

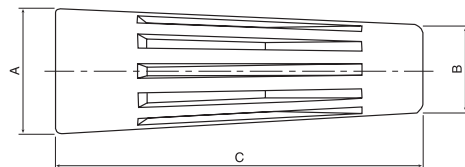
## Interface Dimension



## 1GHz and 3GHz Compared



## Boot Dimension / Part Numbering (for boot only)



Model	Cable	∅A	∅B	C
BNC-color 01	RG-179/U, 1.5C 2V	12.5	5.5	28
BNC-color 02	2.5C 2V, 3C 2V	12.5	6	32
BNC-color 03	1505A, RG-59/U	12.5	8.5	36

↓  
Color Code  
BK - Black  
GY - Gray  
PR - Purple  
YE - Yellow

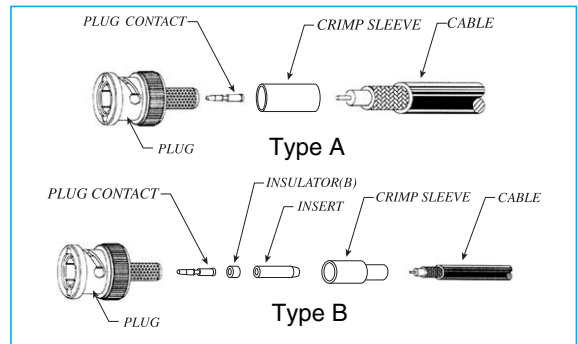
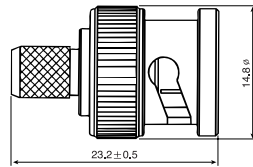
BU - Blue  
GN - Green  
RD - Red

BR - Brown  
OR - Orange  
WH - White

Specifications subject to change without notice. Consult Sam Woo Electronics for the latest specifications.

# BNC 75Ω – High Frequency

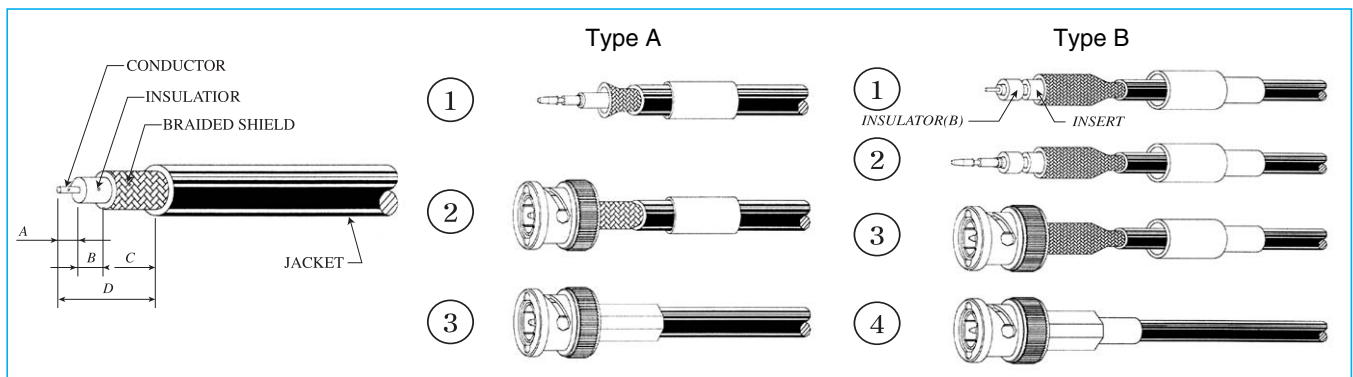
## BNC Plugs



No.	Part Number	Cable Type	Frequency	Cable Stripping(mm)				Assembly Type
				A	B	C	D	
1	BNCC-PC-1.5C-1	1.5C 2V	1	3.5	5.5	8	17	B
2	BNCC-PC-2.5C-1	2.5C 2V	1	3.5	5.5	7	16	A
3	BNCC-PC-3C-1	3C 2V	1	3.5	5.5	7	16	A
4	BNCC-PC-5C-1	5C 2V	1	3	4	8	15	A
5	BNCC-PC-6CHF-1	6CHFB	1	3.5	3.5	9	16	A
6	BNCC-PC-7C-1	7C 2V	1					
7	BNCC-PC-7CHF-1	7CHF	1	3.5	3.5	9	16	A
8	BNCC-PC-6-1	RG6/U	1					
9	BNCC-PC-59U-1	RG59/U, Belden 1505A	1	3.5	5.5	7	16	A
10	BNCC-PC-179U-1	RG179/U	1	3.5	5.5	8	17	B
11	BNCC-PC-1.5C-3	1.5C 2V	3	3	4	8	15	B
12	BNCC-PC-2.5C-3	2.5C 2V	3	3	4	7	14	A
13	BNCC-PC-3C-3	3C 2V	3	3	4	7	14	A
14	BNCC-PC-5C-3	5C 2V	3					
15	BNCC-PC-6CHF-3	6CHFB	3	3	3	9	15	A
16	BNCC-PC-7CHF-3	7CHF	3	3	3	9	15	A
17	BNCC-PC-59U-3	RG59/U, Belden 1505A	3	3	3	9	15	B
18	BNCC-PC-179U-3	RG179/U	3	3	4	8	15	B
19	BNCC-PC-1855A-3	Belden 1855A	3	3	3	9	15	A
20	BNCC-PC-VK2-4	Percon VK2	3	3	4	7	14	B
21	BNCC-PC-VK5/0.6-3	Percon VK5/0.6	3	3	4	7	14	A
22	BNCC-PC-VK6/0.8-3	Percon VK6/0.8	3	3	4	7	14	A
23	BNCC-PC-VK7/1.0-3	Percon VK7/1.0	3	3	4	7	14	A
24	BNCC-PC-VK9-3	Percon VK9	3	3	4	7	14	A

## Cable Assembly Instruction

- Use above cable stripping dimensions



Specifications subject to change without notice. Consult Sam Woo Electronics for the latest specifications.

## Crimp Tools



Sam Woo Tool (SW-HT)



Tool Die



Canare Tool (TC-1)

Tool	Color of Handles	Tool Die	Hexagon		Square		Hexagon		Square		Hexagon	
			A	E	B	D	C	D	E	E		
SW-HT	Red	HTD-02		5.87		1.36		6.48		1.59		5.41
TC-1	Blue	TCD-5CFB	A		B		C	8.05	D	1.2	E	
		TCD-7CA						10.23		1.93		

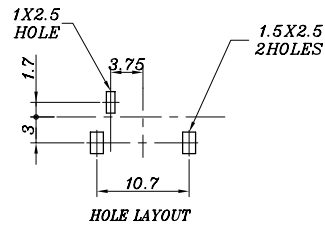
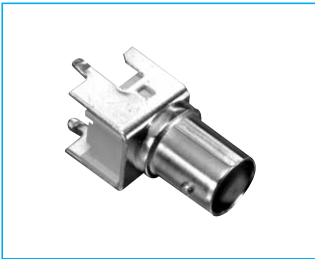
No.	Part Number	Cable Type	Die Spec(mm)					Tool	Tool Die	Tool Maker
			Sleeve			Pin				
			A	C	E	B	D			
1	BNCC-PC-1.5C-1	1.5C 2V			●	●	SW-HT	HTD-02	Sam Woo	
2	BNCC-PC-2.5C-1	2.5C 2V	●			●	SW-HT	HTD-02	Sam Woo	
3	BNCC-PC-3C-1	3C 2V	●			●	SW-HT	HTD-02	Sam Woo	
4	BNCC-PC-5C-1	5C 2V		●		●				
5	BNCC-PC-6CHF-1	6CHFB		●		●	TC-1	TCD-7CA	Canare	
6	BNCC-PC-7C-1	7C 2V								
7	BNCC-PC-7CHF-1	7CHF		●		●	TC-1	TCD-7CA	Canare	
8	BNCC-PC-6-1	RG6/U								
9	BNCC-PC-59U-1	RG59/U, Belden 1505A		●		●	SW-HT	HTD-02	Sam Woo	
10	BNCC-PC-179U-1	RG179/U			●	●	SW-HT	HTD-02	Sam Woo	
11	BNCC-PC-1.5C-3	1.5C 2V			●	●	SW-HT	HTD-02	Sam Woo	
12	BNCC-PC-2.5C-3	2.5C 2V	●			●	SW-HT	HTD-02	Sam Woo	
13	BNCC-PC-3C-3	3C 2V	●			●	SW-HT	HTD-02	Sam Woo	
14	BNCC-PC-5C-3	5C 2V								
15	BNCC-PC-6CHF-3	6CHFB		●		●	TC-1	TCD-7CA	Canare	
16	BNCC-PC-7CHF-3	7CHF		●		●	TC-1	TCD-7CA	Canare	
17	BNCC-PC-59U-3	RG59/U, Belden 1505A		●		●	SW-HT	HTD-02	Sam Woo	
18	BNCC-PC-179U-3	RG179/U			●	●	SW-HT	HTD-02	Sam Woo	
19	BNCC-PC-1855A-3	Belden 1855A		●		●	SW-HT	HTD-02	Sam Woo	
20	BNCC-PC-VK2-4	Percon VK2			●	●	SW-HT	HTD-02	Sam Woo	
21	BNCC-PC-VK5/0.6-3	Percon VK5/0.6			●	●	SW-HT	HTD-02	Sam Woo	
22	BNCC-PC-VK6/0.8-3	Percon VK6/0.8			●	●	SW-HT	HTD-02	Sam Woo	
23	BNCC-PC-VK7/1.0-3	Percon VK7/1.0		●		●	TC-1	TCD-5CFB	Canare	
24	BNCC-PC-VK9-3	Percon VK9		●		●	TC-1	TCD-5CFB	Canare	

Specifications subject to change without notice. Consult Sam Woo Electronics for the latest specifications.

# BNC 75Ω – High Frequency

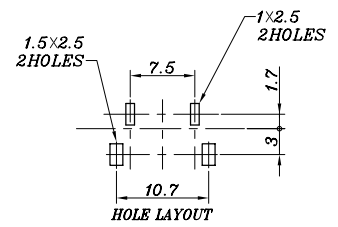
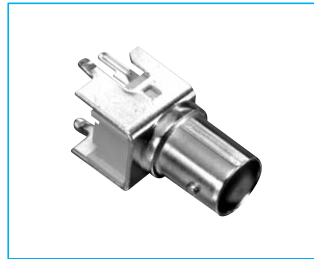
## BNC Receptacles

SW-2497B-PCB



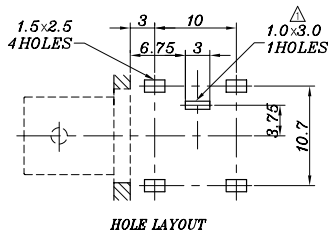
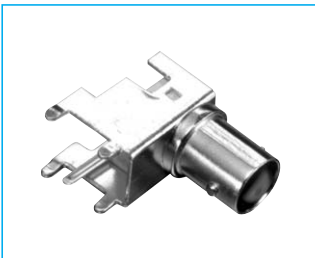
Vertical w/o Switch

SW-2520B-PCB



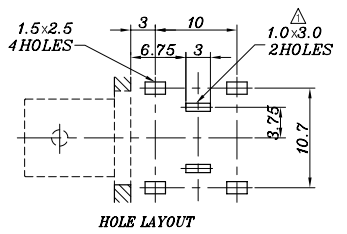
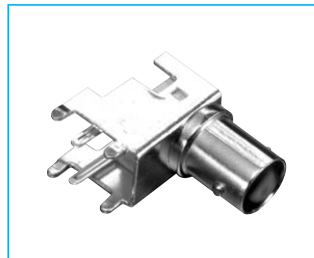
Vertical with Switch

SW-2639B-LPCB



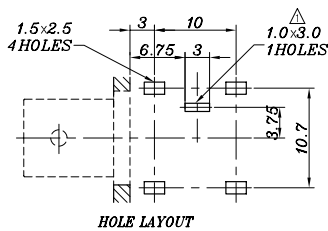
Horizontal w/o Switch

SW-2521B-LPCB



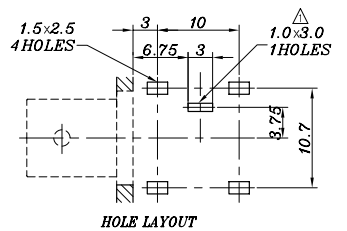
Horizontal with Switch

SW-2635B-LPCB



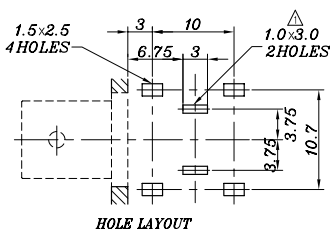
Horizontal w/o Switch (Short)

SW-2645B-LPCB



Horizontal w/o Switch (Short, Brass)

SW-2584B-LPCB



Horizontal with Switch (Short)

BNC-RB-2P



Bulkhead with Switch

BNC-PCL



Horizontal w/o Switch

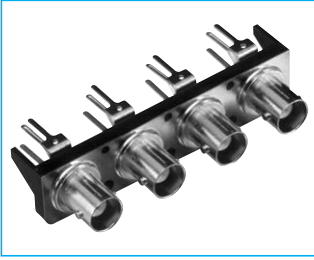
Specifications subject to change without notice. Consult Sam Woo Electronics for the latest specifications.



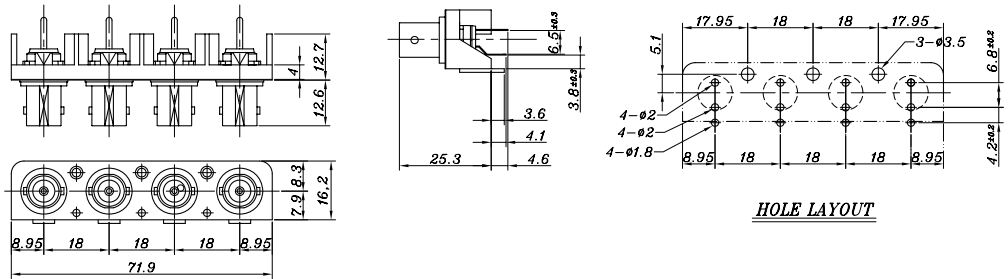
## BNC Receptacles

With Switches

### BNC4-P/B

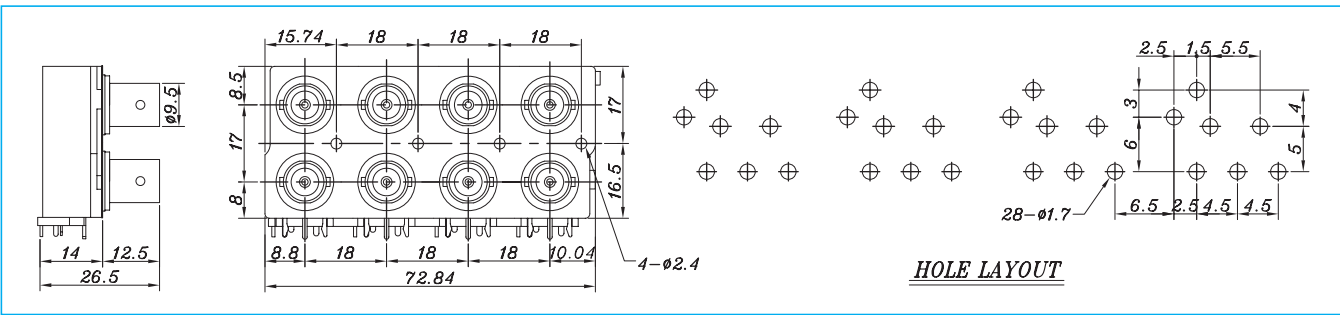


Vertical with 4 Switches



HOLE LAYOUT

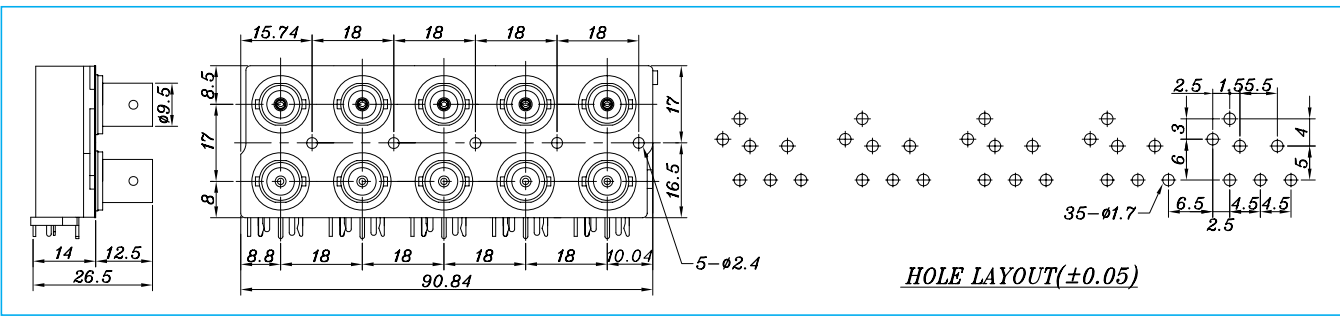
### BNC8-P/B



HOLE LAYOUT

Vertical with 8 Switches

### BNC10-P/B



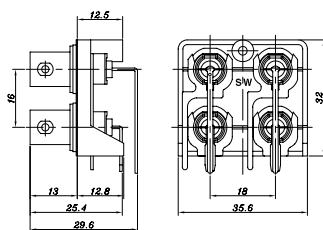
HOLE LAYOUT(±0.05)

Vertical with 10 Switches

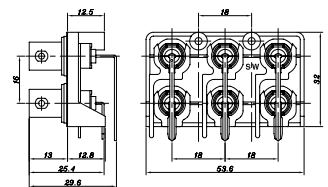
## BNC Receptacles

Without Switches

### BNC4-P/B (N/S)



### BNC6-P/B (N/S)



Specifications subject to change without notice. Consult Sam Woo Electronics for the latest specifications.