

BNC 50Ω, N, M, TNC, F/RCA Series – High Frequency



BNC 50Ω, N, M, TNC, F/RCA Features

- High quality Sam Woo medium-size coaxial connectors provide best performance for various applications.
- 75Ω products available upon request.

Adapter Basic Features

- Between-series adapter.
- BNC-N
- BNC-SMA
- M-RCA
- N-TNC
- BNC-M
- BNC-TNC
- N-M
- BNC-RCA
- F-RCA
- N-SMA
- Other types available upon request.

Major Performance

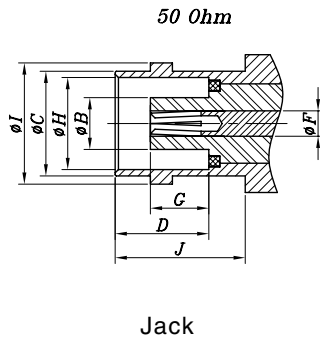
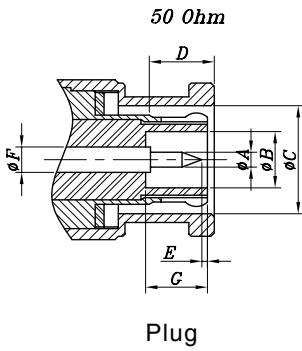
BNC 50Ω	Impedance	50Ω		Contact resistance	Center Contacts	3.0mΩ
	Frequency range	Semi-rigid	DC 18GHz		Outer Contacts	2.5mΩ
		Flexible	DC 12.4GHz	Insulation resistance 5000MΩ min		
	Contact current	DC 2.0A max		Insertion loss	0.05 f(GHz)db	
	Working voltage	Semi-rigid	1000V		V.S.W.R	<1.15+0.02f(GHz)
Flexible		750V		RF leakage	-60dB min @2~3GHz	
N	Impedance	50Ω		Insulation resistance	1000MΩ min	
	Frequency range	DC to 4GHz		Insertion loss	0.6dB max	
	Contact current	DC 1.5A max		V.S.W.R	Straight	1.3+0.04f
	Voltage rating	250V R.M.S			Right-angle	1.4+0.06f
	Contact resistance	Center Contacts	0.3mΩ		RF leakage	-55dB min. between 2 to 3 GHz
Outer Contacts		0.5mΩ				
M	Impedance	50Ω		Contact resistance	Center Contacts	5mΩ
	Frequency range	up to 2 GHz			Outer Contacts	1mΩ
	Contact current	DC 1.5A		Insulation resistance	1000MΩ min	
	Voltage rating	250V R.M.S		V.S.W.R	Straight	1.3 max
					Right-angle	1.35 max
TNC	Impedance	50Ω		Contact resistance	Center Contacts	5mΩ
	Frequency range	up to 2 GHz			Outer Contacts	1mΩ
	Contact current	DC 1.5A		Insulation resistance	1000MΩ min	
	Voltage rating	250V R.M.S		V.S.W.R	Straight	1.3 max
					Right-angle	1.35 max
F / RCA	Impedance	50Ω		Contact resistance	Center Contacts	5mΩ
	Frequency range	up to 2 GHz			Outer Contacts	1mΩ
	Contact current	DC 1.5A		Insulation resistance	1000MΩ min	
	Voltage rating	250V R.M.S		V.S.W.R	Straight	1.3 max
					Right-angle	1.35 max

Material Used / Finish

General	Material	Finish
Body	Zinc alloy or Brass	Nickel plate
Insulator	PTFE	White
Contacts	Pin	Gold plate
	Socket	Gold plate

Specifications subject to change without notice. Consult Sam Woo Electronics for the latest specifications.

BNC 50Ω Interface Dimensions

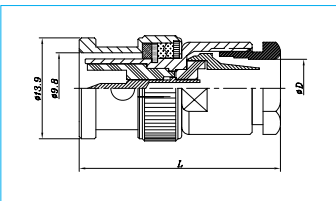


Interface Dimension

BNC	Plug mm		Jack mm	
	min.	max.	min.	max.
∅A	1.32	1.37		
∅B	4.83			4.72
∅C	9.78	9.91	9.6	9.7
D	5.38		8.31	8.51
E	0.35		4.95	
∅F	2.14		2.14	
G	5.28		max1.5	5.28
∅H			8.1	8.15
∅I			10.97	11.07
J			10.52	

BNC Plugs

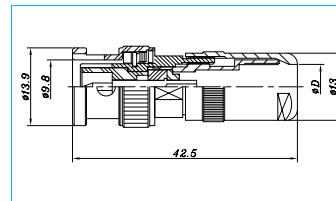
BNC Straight Plug (Clamp)



Part Number

BNC-P-5
BNC-P-7
BNC-P-8U
BNC-P-58U
BNC-P-59U

BNC King Size Plug (Clamp)

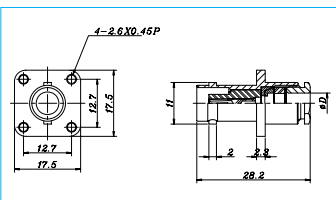


Part Number

BNC-PK-58U
BNC-PK-59U
BNC-PK-5V
BNC-PK-5W
BNC-PK-7C
BNC-PK-10C

BNC Jack

Straight Panel (Clamp)

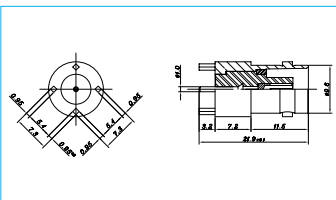


Part Number

BNC-PJ-58U
BNC-PJ-59U

BNC Receptacles

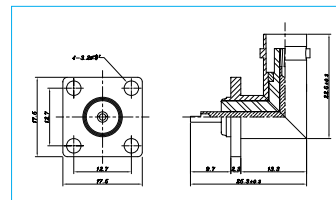
Straight PCB Mount



Part Number

BNC-JR

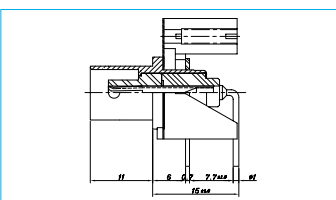
Right-angle Flange Panel



Part Number

BNC-LR

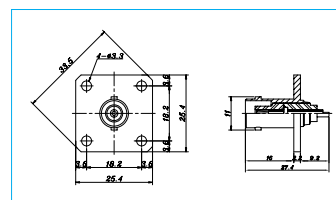
Horizontal w/o Switch



Part Number

BNC-PCL

Flange Panel



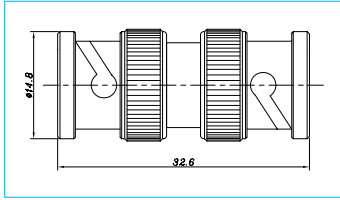
Part Number

BNC-R

Specifications subject to change without notice. Consult Sam Woo Electronics for the latest specifications.

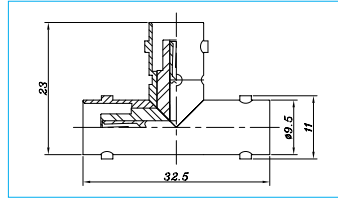
Adapters

Plug - Plug Adapter



Part Number
BNC-A-PP

Jack - Jack - Jack Adapter

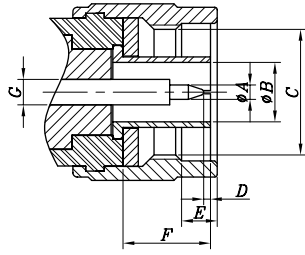


Part Number
BNC-TA-JJJ

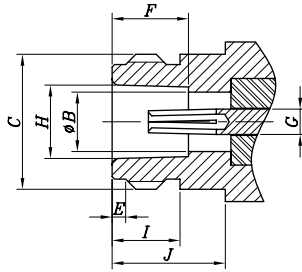


Specifications subject to change without notice. Consult Sam Woo Electronics for the latest specifications.

N Interface Dimensions



Plug



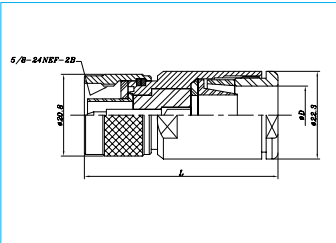
Jack

Interface Dimension

N	Plug		Jack	
	mm		mm	
	min.	max.	min.	max.
ØA	1.6	1.676		
ØB	7			7.06
C	5/8-24 UNEF-2B		5/8-24 UNEF-2A	
D	0	1.57		
E	4.013	4.267	1.19	1.96
F	9.25		9.05	9.19
G	3.04		3.04	
H			8.54	8.74
I			6.76	
J			10.72	

N Plugs

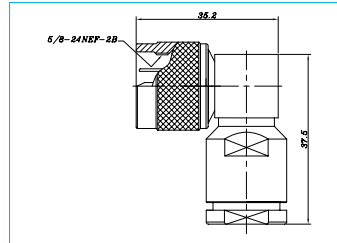
Straight (Clamp)



Part Number

N-P-3
N-P-5
N-P-7
N-P-8U
N-P-10
N-P-14U
N-P-17U
N-P-58U
N-P-59U

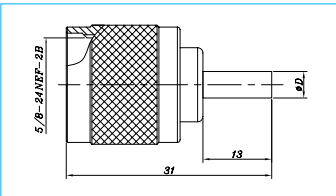
Right-angle (Clamp)



Part Number

N-LP-8U
N-LP-58U
N-LP-59U

Straight (Crimp)

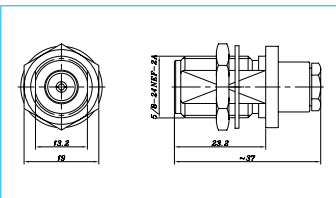


Part Number

N-PC-58U
N-PC-59U
N-PC-178U
N-PC-316U

N Jacks

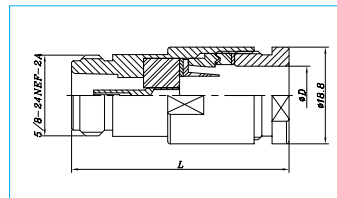
Bulkhead (Clamp)



Part Number

N-BJ-58U
N-BJ-59U

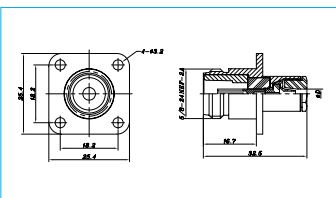
Straight (Clamp)



Part Number

N-J-8U
N-J-10
N-J-17U
N-J-58U
N-J-59U

Panel (Clamp)



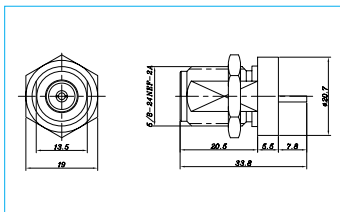
Part Number

N-PJ-8U
N-PJ-10
N-PJ-58U
N-PJ-59U

N – High Frequency

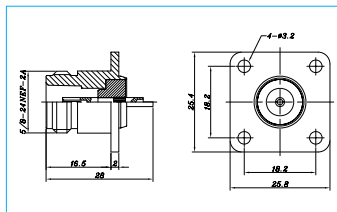
N Receptacles

Bulkhead



Part Number
N-BR

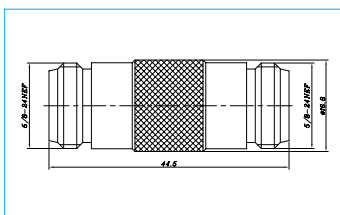
Panel



Part Number
N-R

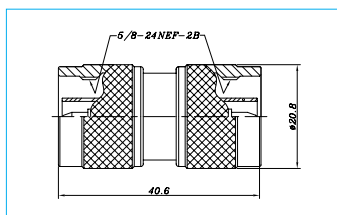
N Adapter and Others

Jack - Jack Adapter



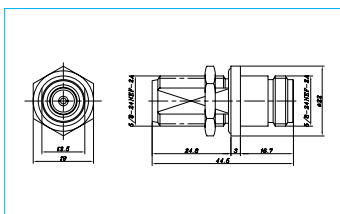
Part Number
N-A-JJ

Plug - Plug Adapter



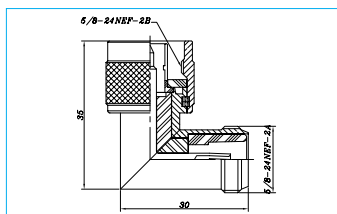
Part Number
N-A-PP

Jack - Jack Bulkhead Adapter



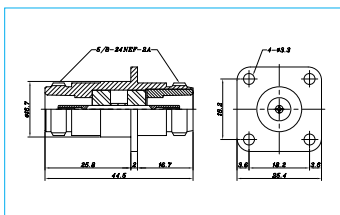
Part Number
N-BA-JJ

Plug - Jack Right-angle Adapter



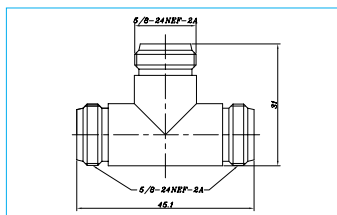
Part Number
N-LA-PJ

Jack - Jack Panel Adapter



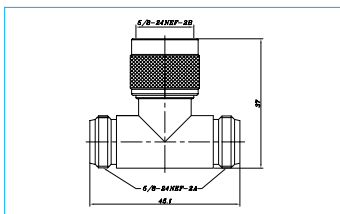
Part Number
N-PA-JJ

Jack - Jack - Jack Adapter



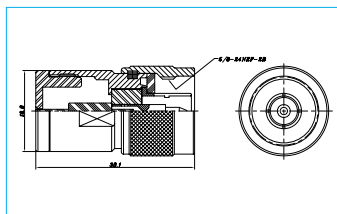
Part Number
N-TA-JJJ

Jack - Plug - Jack Adapter



Part Number
N-TA-JPJ

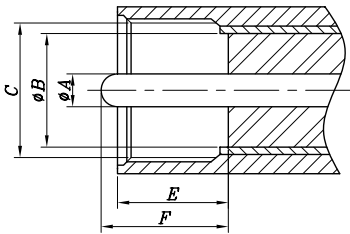
Plug Terminator



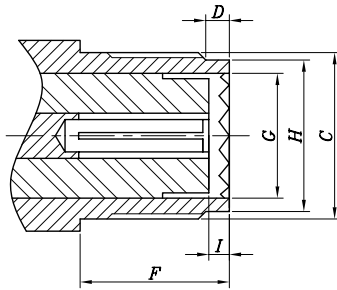
Part Number
N-DUMMY

Specifications subject to change without notice. Consult Sam Woo Electronics for the latest specifications.

M Interface Dimensions



Plug



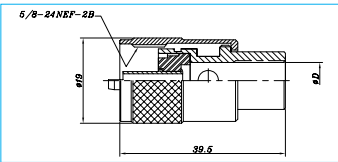
Jack

Interface Dimension

SMA	Plug		Jack	
	min.	max.	min.	max.
ØA	3.91			
ØB	11.56			
C	5/8-24 UNEF-2B		5/8-24 UNEF-2A	
D			1.19	
E	9.91			
F	11.1			
G			12.22	
H			13.92	
I			6.76	

M Plugs

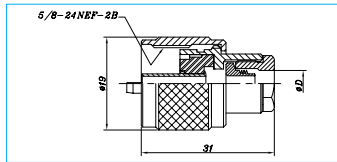
Straight



Part Number

M-P-5
M-P-7
M-P-10

Straight (Clamp)

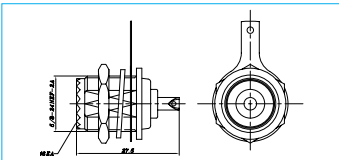


Part Number

M-P-58U
M-P-59U

M Receptacles

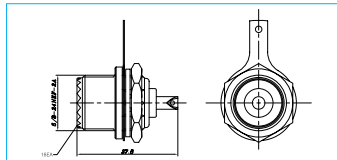
Bulkhead Front Nut



Part Number

CH-239(A)

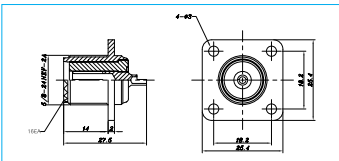
Bulkhead Back Nut



Part Number

CH-239(B)

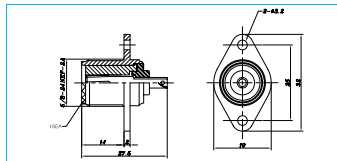
Panel



Part Number

SO-239

Panel (Narrow Flange)

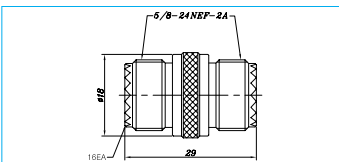


Part Number

SO-239(D)

M Adapter & Others

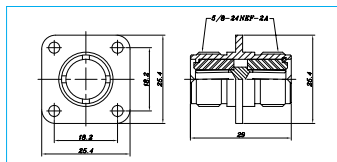
Jack-Jack Adapter



Part Number

M-A-JJ

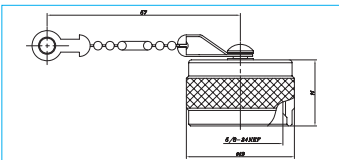
Jack-Jack Panel Adapter



Part Number

M-PA-JJ

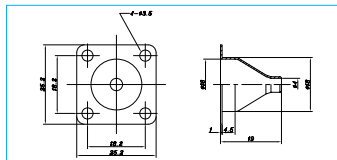
Jack Cap



Part Number

M-JC

Hood



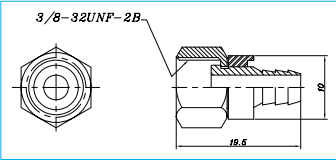
Part Number

M-H

Specifications subject to change without notice. Consult Sam Woo Electronics for the latest specifications.

F

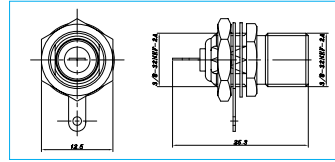
Plug



Part Number

F-59

Jack

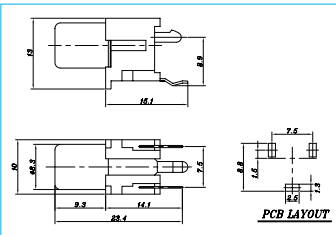


Part Number

F-61

RCA

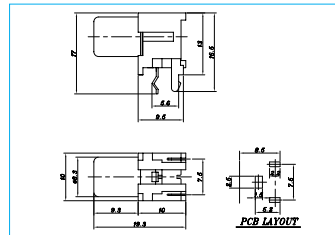
PCB Plug



Part Number

RCA-JBPCB

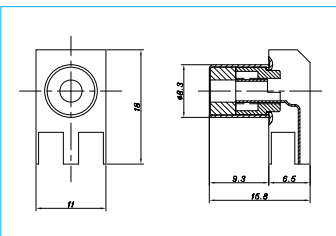
PCB Jack



Part Number

RCA-LJBPCB

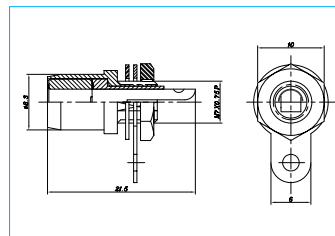
PCB Plug



Part Number

RCA-B/J

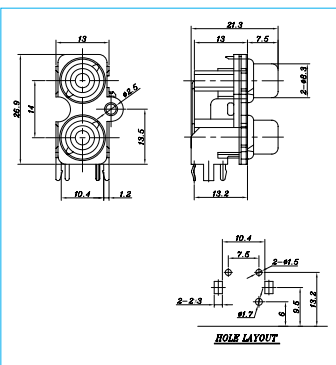
PCB Jack



Part Number

RCA-P/J

PCB Jack



Part Number

RCA2-P/B

Specifications subject to change without notice. Consult Sam Woo Electronics for the latest specifications.